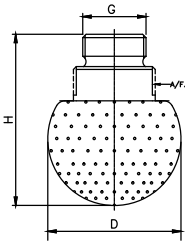
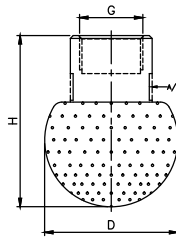


# EI Series Static Spray Ball Stainless Steel & Plastic Versions

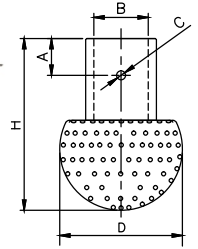
EI



Male Connection

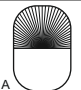
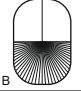
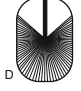



Female Connection



Pin Type Connection

EI Series Static Spray Ball is a newly designed stationary spray ball with multiple orifices. Its unique design helps to cover complete 360 degree with impact type jet sprays. It is available in many sizes and flow rates. Impact type spray helps to remove sticky stains. Also it can be used with saturated steam.

Coverage Type	Spray Angle
	180°
	180°
	270°
	360°

**Design features**

- Jet type cleaning
- Impact type cleaning
- Can be used for steam applications
- Available in Threaded, Pin type and Tri Clover type end connection
- Available in SS304, SS316, SS316L, Hastelloy C-276, PTFE

Cleaning Diameter up to 2.0 meters

**End Connection :**

- X – BSP,
- Y – BSPT,
- Z – NPT Available.

MODEL NO.	SPRAY ANGLE	CONNECTION										FLOW CAPACITY IN LPM AT DIFFERENT PRESSURE					
		1/8"	1/4"	3/8"	1/2"	3/4"	1"	1 1/4"	1 1/2"	2"	PRESSURE [BAR]						
											1.5	2	3	5	7		
EI1.650	A/B/D/E	●											5.63	6.50	7.96	10.28	28.06
EI1.800	A/B/D/E	●											6.93	8.00	9.80	12.65	14.97
EI2.100	A/B/D/E	●											8.66	10.00	12.25	15.81	18.71
EI2.125	A/B/D/E	●											10.39	12.50	14.70	18.97	22.45
EI2.140	A/B/D/E	●											12.12	14.00	17.15	22.14	26.19
EI2.160	A/B/D/E	●											13.86	16.00	19.60	25.30	29.93
EI2.180	A/B/D/E	●	●	●	●								15.59	18.00	22.05	28.46	33.67
EI2.220	A/B/D/E	●	●	●	●								19.05	22.00	26.94	34.79	41.16
EI2.280	A/B/D/E		●	●	●								24.25	28.00	34.29	44.27	52.38
EI2.320	A/B/D/E		●	●	●								27.71	32.00	39.19	50.60	59.87
EI2.400	A/B/D/E		●	●	●								34.64	40.00	48.99	63.25	74.83
EI2.520	A/B/D/E		●	●	●								45.03	52.00	63.69	82.22	97.28
EI2.600	A/B/D/E			●	●								51.96	60.00	73.48	94.87	112.25
EI2.700	A/B/D/E				●								60.62	70.00	85.73	110.68	130.96
EI2.800	A/B/D/E				●	●							69.28	80.00	97.98	126.49	149.67
EI2.900	A/B/D/E				●	●							77.94	90.00	110.23	142.30	168.37
EI3.100	A/B/D/E				●	●	●						86.60	100.00	122.47	158.11	187.08
EI3.120	A/B/D/E					●	●						103.92	120.00	149.74	189.74	224.50
EI3.140	A/B/D/E					●	●						121.24	140.00	171.46	221.36	261.92
EI3.160	A/B/D/E						●	●					138.56	160.00	195.96	252.98	299.33
EI3.190	A/B/D/E							●	●				164.54	190.00	232.70	300.42	355.46
EI3.225	A/B/D/E								●	●	●		194.86	225.00	275.57	355.76	420.94
EI3.250	A/B/D/E									●	●	●	216.51	250.00	306.19	395.28	487.71
EI3.275	A/B/D/E										●	●	238.46	275.00	336.19	434.81	514.48
EI3.300	A/B/D/E											●	259.81	300.00	367.42	474.34	561.25
EI3.325	A/B/D/E											●	281.46	325.00	398.04	513.87	608.02
EI3.350	A/B/D/E											●	303.11	350.00	428.66	553.40	654.79
EI3.375	A/B/D/E											●	324.76	375.00	459.28	592.93	701.56
EI3.400	A/B/D/E											●	346.41	400.00	489.90	632.46	748.33
EI3.425	A/B/D/E											●	368.06	425.00	520.52	671.98	795.10
EI3.450	A/B/D/E											●	389.71	450.00	551.14	711.51	841.87

CONNECTION	1/8"			1/4"			3/8"			1/2"			3/4"			1"			1 1/4"			1 1/2"			2"		
DIMENSION	H	D	A/F	H	D	A/F	H	D	A/F	H	D	A/F	H	D	A/F	H	D	A/F	H	D	A/F	H	D	A/F	H	D	A/F
MALE	30	20	12	33.5	22	12	42	30	15	60	40	19	78	55	32	90	70	40	105	80	46	115	90	55	128	100	62
FEMALE	30	20	12	33.5	28	16	50	40	22	55	48	27	78	55	32	90	70	40	105	80	46	115	90	55	128	100	62
	Weight (Metals) = XX gms. Approx			Weight (Metals) = XX gms. Approx			Weight (Metals) = XX gms. Approx			Weight (Metals) = XX gms. Approx			Weight (Metals) = XX gms. Approx			Weight (Metals) = XX gms. Approx			Weight (Metals) = XX gms. Approx			Weight (Metals) = XX gms. Approx			Weight (Metals) = XX gms. Approx		

CONNECTION	DN 8				DN 10				DN 15				DN 20				DN 25				DN 32				DN 40				DN 50											
DIMENSION	H	D	A/F	C	A	H	D	A/F	C	A	H	D	A/F	C	A	H	D	A/F	C	A	H	D	A/F	C	A	H	D	A/F	C	A	H	D	A/F	C	A					
PIN TYPE	32.5	20	8.2	2.2	9	37.5	24	12.2	2.2	9	42	30	18.2	2.2	9	53	40	22.2	2.5	9	90	70	28.2	2.8	18	105	80	-	2.8	18	115	90	-	2.8	18	128	100	52.3	3.3	25