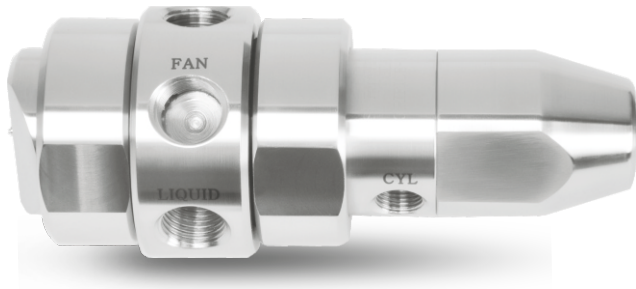


RB Series Coating Spray Nozzles



Design Summary :

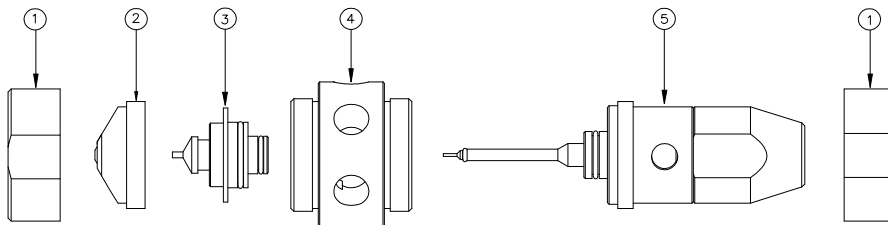
Liquid Orifice Range: 0.5 to 2.0 MM

- RB Series variable spray nozzles provide uniform spray distribution with uniform droplet sizes, even when spraying viscous fluids.
- RB series works with HVLP principle where the atomization is possible at lowest pressures.
- RB series comes with Independent inlets for Atomization air, Fan air, Cylinder air and Liquid for complete control over the spray nozzle.

DESIGN FEATURES

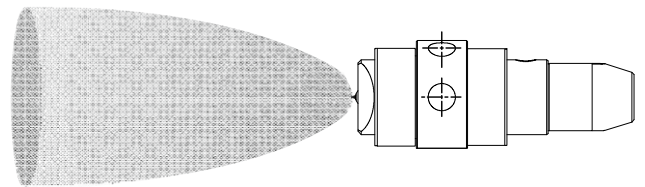
1. GMP model
2. Complete SS316L construction
3. Separate atomizing and fan air lines for complete control.
4. Provides variable coverage and fine control of drop size without affecting liquid flow rates.
5. Non clogging and anti - bearding design
6. Auto shut-off & anti-drip feature
7. Self-cleaning needle design.
8. Comes with Wide range of orifice size

- RB series is best suitable for auto coaters for large scale production.
- Additional inlet /outlet port allows for liquid re-circulation that effectively maintains the flow of viscous liquids.
- Having removable auto shut off and spring loaded needle cylinder assembly is provided for maintenance



Part Details

- 1 Lock Nut
- 2 Air Cap
- 3 Fluid Cap
- 4 Body
- 5 Cylinder (Needle) Assembly



With fan air: Flat Spray Pattern.

Without fan air: Round Spray Pattern.

