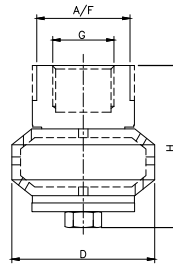
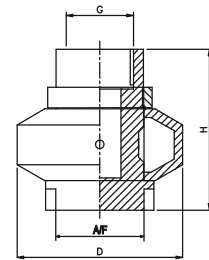


Specially designed self rotating nozzle, rotates because of reaction principle of spraying water jets. For rinsing small and medium sized vessels for example dairy, chemical, pharmaceutical and food industries. Material of construction- corrosion – resistance PTFE. (Range available from 1/2" to 2")



Metal Versions



Plastic Versions



**Male Connection On Request**

| Coverage Type | Spray Angle |
|---------------|-------------|
|               | 270°        |
|               | 270°        |
|               | 360°        |

End Connection :  
 X – BSP,  
 Y - BSPT,  
 Z – NPT Available.

| MODEL NO. | SPRAY ANGLE | CONNECTION |      |    |        |    | FLOW CAPACITY IN LPM AT DIFFERENT PRESSURE |       |        |        |        | M1/M2                            |              | P3/P4 |     |
|-----------|-------------|------------|------|----|--------|----|--|-------|--------|--------|--------|----------------------------------|--------------|-------|-----|
|           |             |            |      |    |        |    | PRESSURE [BAR]                             |       |        |        |        | SS304/SS316                      | TEFLON/NYLON |       |     |
|           |             | 1/2"       | 3/4" | 1" | 1 1/2" | 2" | 1.5  | 2     | 3      | 5      | 7      | G/A DIMENSION. MM                |              |       |     |
| EC2.320   | C/D/E       | ●          |      |    |        |    | 27.71                                      | 32.00 | 39.19  | 50.60  | 59.87  | CONN.                            | H            | D     | A/F |
| EC2.400   | C/D/E       | ●          | ●    |    |        |    | 34.64                                      | 40.00 | 48.99  | 63.25  | 74.83  | Weight (Metals) = XX gms. Approx |              |       |     |
| EC2.520   | C/D/E       | ●          | ●    | ●  |        |    | 45.03                                      | 52.00 | 63.69  | 82.22  | 97.28  | 3/4"                             | 68           | 58.5  | 32  |
| EC2.720   | C/D/E       |            | ●    | ●  |        |    | 62.35                                      | 72.00 | 88.18  | 113.84 | 134.70 | Weight (Metals) = XX gms. Approx |              |       |     |
| EC2.950   | C/D/E       |            | ●    | ●  |        |    | 82.27                                      | 95.00 | 116.35 | 150.21 | 177.73 | 1"                               | 76.2         | 78.5  | 42  |
| EC3.120   | C/D/E       |            | ●    | ●  | ●      |    | 103.92                                     | 120.0 | 146.97 | 189.74 | 224.50 | Weight (Metals) = XX gms. Approx |              |       |     |
| EC3.140   | C/D/E       |            | ●    | ●  | ●      |    | 121.24                                     | 140.0 | 171.46 | 221.36 | 261.92 | 1 1/2"                           | 92           | 92    | 55  |
| EC3.150   | C/D/E       |            |      | ●  | ●      |    | 138.56                                     | 160.0 | 195.96 | 252.98 | 299.33 | Weight (Metals) = XX gms. Approx |              |       |     |
| EC3.190   | C/D/E       |            |      |    | ●      | ●  | 164.54                                     | 190.0 | 232.70 | 300.42 | 355.46 | 2"                               | 111          | 124   | 66  |
| EC3.225   | C/D/E       |            |      |    | ●      | ●  | 194.54                                     | 225.0 | 275.57 | 355.76 | 420.94 | Weight (Metals) = XX gms. Approx |              |       |     |
| EC3.250   | C/D/E       |            |      |    | ●      | ●  | 216.51                                     | 250.0 | 306.19 | 395.28 | 467.71 |                                  |              |       |     |