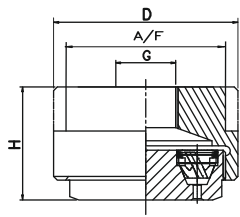


DG Series Multiple Full Cone Spray Nozzles

DG



Multiple spray nozzles, consisting of seven fine atomizing hollow cone nozzles, provide a fog-like full cone pattern with relatively high flow volumes. The overlapping hollow cone nozzles produce a 130° full cone spray pattern of very fine droplets that cannot be achieved by a single orifice spray nozzle of the same flow rate size. The resulting increased droplet surface area of the atomized liquid provides greater efficiency in gas treatment and cooling application ideal for reaction towers which do not use packing.



Spray Angle 75°

Characteristic :

This type of nozzle gives fine atomization with the aid of several hollow cones spraying into one another.

Applications :

- Cooling Of Gaseous And Solid Material
- In Desuperheaters
- Chlorine Precipitation
- For Improving The Chemical Reaction By Means Of Enlarging the Contact Surface

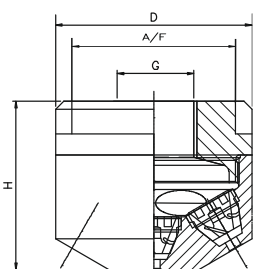
75° SPRAY ANGLE	CONNECTION END		ORIFICE SIZE (mm)	FLOW CAPACITY IN LPM AT DIFFERENT PRESSURE VALUES							G/A DIMENSION. MM			
	1/2"	3/4"		PRESSURE [BAR]							CONN.	H	D	A/F
MODEL NO.	BSP BSPT NPT	BSP BSPT NPT		0.5	1.0	2.0	3.0	5.0	7.0	10.0				
DG15.150	●		0.5	0.75	1.06	1.50	1.84	2.37	2.81	3.35	1/2"	30	50	46
DG15.200	●		0.5	1.00	1.41	2.00	2.45	3.16	3.74	4.47	Weight (Metals) = 216.0 gms. Approx			
DG15.300	●		1.0	1.50	2.12	3.00	3.67	4.74	5.61	6.71	3/4"	46	75	65
DG15.400	●		1.5	2.00	2.83	4.00	4.90	6.32	7.48	8.94	Weight (Metals) = 716.0 gms. Approx			
DG15.475	●		1.5	2.37	3.36	4.75	5.82	7.51	8.89	10.62				
DG15.650	●		2.0	3.25	4.60	6.50	7.96	10.28	12.16	14.53				
DG15.800	●	●	2.2	4.00	5.66	8.00	9.80	12.65	14.97	17.89				
DG25.100	●	●	2.5	5.00	7.07	10.00	12.25	15.81	18.71	22.36				
DG25.125	●	●	2.8	6.25	8.84	12.50	15.31	19.76	23.39	27.95				
DG25.160		●	3.2	8.00	11.31	16.00	19.60	25.30	29.93	35.78				
DG25.200		●	3.5	10.00	14.14	20.00	24.49	31.62	37.42	44.72				
DG25.225		●	3.8	11.25	15.91	22.50	27.56	35.58	42.09	50.31				
DG25.250		●	4.0	12.50	17.68	25.00	30.62	39.53	46.77	55.90				
DG25.320		●	4.5	16.00	22.63	32.00	39.19	50.60	59.87	71.55				
DG25.400		●	5.0	20.00	28.28	40.00	48.99	63.25	74.83	89.44				
DG25.520		●	5.7	26.00	36.77	52.00	63.69	82.22	97.28	116.28				

DG Series Multiple Full Cone Spray Nozzles

DG



Multiple spray nozzles, consisting of seven fine atomizing hollow cone nozzles, provide a fog-like full cone pattern with relatively high flow volumes. The overlapping hollow cone nozzles produce a 130° full cone spray pattern of very fine droplets that cannot be achieved by a single orifice spray nozzle of the same flow rate size. The resulting increased droplet surface area of the atomized liquid provides greater efficiency in gas treatment and cooling application ideal for reaction towers which do not use packing.



Spray Angle 130°

Characteristic :

This type of nozzle gives fine atomization with the aid of several hollow cones spraying into one another.

Applications :

- Cooling Of Gaseous And Solid Material
- In Desuperheaters
- Chlorine Precipitation
- For Improving The Chemical Reaction By Means Of Enlarging the Contact Surface

130° SPRAY ANGLE	CONNECTION END		ORIFICE SIZE (mm)	FLOW CAPACITY IN LPM AT DIFFERENT PRESSURE VALUES							G/A DIMENSION. MM			
	1/2"	3/4"		PRESSURE [BAR]							CONN.	H	D	A/F
MODEL NO.	BSP BSPT NPT	BSP BSPT NPT		0.5	1.0	2.0	3.0	5.0	7.0	10.0				
DG19.150	●		0.5	0.75	1.06	1.50	1.84	2.37	2.81	3.35	1/2"	38	40	30
DG19.200	●		0.5	1.00	1.41	2.00	2.45	3.16	3.74	4.47	Weight (Metals) = 216.0 gms. Approx			
DG19.300	●		1.0	1.50	2.12	3.00	3.67	4.74	5.61	6.71	3/4"	51.5	60	50
DG19.400	●		1.5	2.00	2.83	4.00	4.90	6.32	7.48	8.94	Weight (Metals) = 216.0 gms. Approx			
DG19.475	●		1.5	2.37	3.36	4.75	5.82	7.51	8.89	10.62				
DG19.650	●		2.0	3.25	4.60	6.50	7.96	10.28	12.16	14.53				
DG19.800	●	●	2.0	4.00	5.66	8.00	9.80	12.65	14.97	17.89				
DG29.100	●	●	2.2	5.00	7.07	10.00	12.25	15.81	18.71	22.36				
DG29.125	●	●	2.5	6.25	8.84	12.50	15.31	19.76	23.39	27.95				
DG29.160		●	2.8	8.00	11.31	16.00	19.60	25.30	29.93	35.78				
DG29.200		●	3.2	10.00	14.14	20.00	24.49	31.62	37.42	44.72				
DG29.225		●	3.4	11.25	15.91	22.50	27.56	35.58	42.09	50.31				
DG29.250		●	3.5	12.50	17.68	25.00	30.62	39.53	46.77	55.90				
DG29.320		●	4.0	16.00	22.63	32.00	39.19	50.60	59.87	71.55				
DG29.400		●	4.5	20.00	28.28	40.00	48.99	63.25	74.83	89.44				
DG29.520		●	5.1	26.00	36.77	52.00	63.69	82.22	97.28	116.28				
DG29.650		●	5.7	32.50	45.96	65.00	79.61	102.77	121.60	145.34				