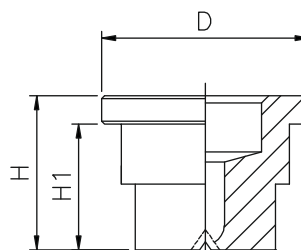


CC Series Flat Spray Nozzles

CC

Versatile program offering a wide range of performance and stable jet angles, easy adjusting of jet by means of loosening the nut stable jet angles headers, equipped with these nozzles, show a highly uniform total distribution of liquids, even at different installation heights and centers universally suitable.



Application :

Jet cleaning, surface treatment, filter cleaning, band cleaning, lubricating, coating.

Flat nozzle tips are usually mounted onto a pipe by means of a welded nipple or a clamp, and secured in place with a retaining nut. Seals are available for higher pressure operation. They can be therefore easily replaced and the jet can be conveniently oriented in the desired direction.

The tip models shown in this page deliver very low flow values, the precision machined tiny orifices can be protected against the risk of plugging by means of a filter fitting inside our nipples and clamps which are designed for this purpose.

15° SPRAY ANGLE	ORIFICE SIZE (mm)	FLOW CAPACITY IN LPM AT DIFFERENT PRESSURE							G/A DIMENSION. MM		
		PRESSURE [BAR]									
MODEL NO.		0.5	1.0	2.0	3.0	5.0	7.0	10.0	H	H1	D
CC11.050	0.8	0.25	0.35	0.50	0.61	0.79	0.94	1.12	11	9	14.8
CC11.075	1.0	0.37	0.53	0.75	0.92	1.19	1.40	1.68	Weight (Metals) = 9.0 gms. Approx		
CC11.100	1.2	0.50	0.71	1.00	1.22	1.58	1.87	2.24			
CC11.150	1.5	0.75	1.06	1.50	1.84	2.37	2.81	3.35			
CC11.175	1.6	0.87	1.24	1.75	2.14	2.77	3.27	3.91			
CC11.200	1.7	1.00	1.41	2.00	2.45	3.16	3.74	4.47			
CC11.250	1.9	1.25	1.77	2.50	3.06	3.95	4.68	5.59			
CC11.300	2.1	1.50	2.12	3.00	3.67	4.74	5.61	6.71			
CC11.350	2.3	1.75	2.47	3.50	4.29	5.53	6.55	7.83			
CC11.400	2.4	2.00	2.83	4.00	4.90	6.32	7.48	8.94			
CC11.475	2.7	2.37	3.36	4.75	5.82	7.51	8.89	10.62			
CC11.650	3.1	3.25	4.60	6.50	7.96	10.28	12.16	14.53			
CC11.800	3.5	4.00	5.66	8.00	9.80	12.65	14.97	17.89			
CC21.100	3.9	5.00	7.07	10.00	12.25	15.81	18.71	22.36			
CC21.125	4.3	6.25	8.84	12.50	15.31	19.76	23.39	27.95			
CC21.160	4.9	8.00	11.31	16.00	19.60	25.30	29.93	35.78			
CC21.180	5.2	9.00	12.73	18.00	22.05	28.46	33.67	40.25			
CC21.200	5.5	10.00	14.14	20.00	24.49	31.62	37.42	44.72			
CC21.225	5.8	11.25	15.91	22.50	27.56	35.58	42.09	50.31			
CC21.250	6.1	12.50	17.68	25.00	30.62	39.53	46.77	55.90			

CC Series Flat Spray Nozzles

30° SPRAY ANGLE	ORIFICE SIZE (mm)	FLOW CAPACITY IN LPM AT DIFFERENT PRESSURE							G/A DIMENSION. MM		
MODEL NO.		PRESSURE [BAR]									
		0.5	1.0	2.0	3.0	5.0	7.0	10.0	H	H1	D
CC12.050	0.8	0.25	0.35	0.50	0.61	0.79	0.94	1.12	11	9	14.8
CC12.075	1.0	0.37	0.53	0.75	0.92	1.19	1.40	1.68	Weight (Metals) = 9.0 gms. Approx		
CC12.100	1.2	0.50	0.71	1.00	1.22	1.58	1.87	2.24			
CC12.150	1.5	0.75	1.06	1.50	1.84	2.37	2.81	3.35			
CC12.175	1.6	0.87	1.24	1.75	2.14	2.77	3.27	3.91			
CC12.200	1.7	1.00	1.41	2.00	2.45	3.16	3.74	4.47			
CC12.250	1.9	1.25	1.77	2.50	3.06	3.95	4.68	5.59			
CC12.300	2.1	1.50	2.12	3.00	3.67	4.74	5.61	6.71			
CC12.350	2.3	1.75	2.47	3.50	4.29	5.53	6.55	7.83			
CC12.400	2.4	2.00	2.83	4.00	4.90	6.32	7.48	8.94			
CC12.475	2.7	2.37	3.36	4.75	5.82	7.51	8.89	10.62			
CC12.650	3.1	3.25	4.60	6.50	7.96	10.28	12.16	14.53			
CC12.800	3.5	4.00	5.66	8.00	9.80	12.65	14.97	17.89			
CC22.100	3.9	5.00	7.07	10.00	12.25	15.81	18.71	22.36			
CC22.125	4.3	6.25	8.84	12.50	15.31	19.76	23.39	27.95			
CC22.160	4.9	8.00	11.31	16.00	19.60	25.30	29.93	35.78			
CC22.180	5.2	9.00	12.73	18.00	22.05	28.46	33.67	40.25			
CC22.200	5.5	10.00	14.14	20.00	24.49	31.62	37.42	44.72			
CC22.225	5.8	11.25	15.91	22.50	27.56	35.58	42.09	50.31			
CC22.250	6.1	12.50	17.68	25.00	30.62	39.53	46.77	55.90			

45° SPRAY ANGLE	ORIFICE SIZE (mm)	FLOW CAPACITY IN LPM AT DIFFERENT PRESSURE							G/A DIMENSION. MM		
MODEL NO.		PRESSURE [BAR]									
		0.5	1.0	2.0	3.0	5.0	7.0	10.0	H	H1	D
CC13.050	0.8	0.25	0.35	0.50	0.61	0.79	0.94	1.12	11	9	14.8
CC13.075	1.0	0.37	0.53	0.75	0.92	1.19	1.40	1.68	Weight (Metals) = 9.0 gms. Approx		
CC13.100	1.2	0.50	0.71	1.00	1.22	1.58	1.87	2.24			
CC13.150	1.5	0.75	1.06	1.50	1.84	2.37	2.81	3.35			
CC13.175	1.6	0.87	1.24	1.75	2.14	2.77	3.27	3.91			
CC13.200	1.7	1.00	1.41	2.00	2.45	3.16	3.74	4.47			
CC13.250	1.9	1.25	1.77	2.50	3.06	3.95	4.68	5.59			
CC13.300	2.1	1.50	2.12	3.00	3.67	4.74	5.61	6.71			
CC13.350	2.3	1.75	2.47	3.50	4.29	5.53	6.55	7.83			
CC13.400	2.4	2.00	2.83	4.00	4.90	6.32	7.48	8.94			
CC13.475	2.7	2.37	3.36	4.75	5.82	7.51	8.89	10.62			
CC13.650	3.1	3.25	4.60	6.50	7.96	10.28	12.16	14.53			
CC13.800	3.5	4.00	5.66	8.00	9.80	12.65	14.97	17.89			
CC23.100	3.9	5.00	7.07	10.00	12.25	15.81	18.71	22.36			
CC23.125	4.3	6.25	8.84	12.50	15.31	19.76	23.39	27.95			
CC23.160	4.9	8.00	11.31	16.00	19.60	25.30	29.93	35.78			
CC23.180	5.2	9.00	12.73	18.00	22.05	28.46	33.67	40.25			
CC23.200	5.5	10.00	14.14	20.00	24.49	31.62	37.42	44.72			
CC23.225	5.8	11.25	15.91	22.50	27.56	35.58	42.09	50.31			
CC23.250	6.1	12.50	17.68	25.00	30.62	39.53	46.77	55.90			

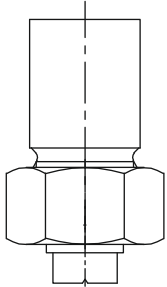
CC Series Flat Spray Nozzles

60° SPRAY ANGLE	ORIFICE SIZE (mm)	FLOW CAPACITY IN LPM AT DIFFERENT PRESSURE							G/A DIMENSION. MM		
MODEL NO.		PRESSURE [BAR]									
		0.5	1.0	2.0	3.0	5.0	7.0	10.0	H	H1	D
CC14.050	0.8	0.25	0.35	0.50	0.61	0.79	0.94	1.12	11	9	14.8
CC14.075	1.0	0.37	0.53	0.75	0.92	1.19	1.40	1.68	Weight (Metals) = 9.0 gms. Approx		
CC14.100	1.2	0.50	0.71	1.00	1.22	1.58	1.87	2.24			
CC14.150	1.5	0.75	1.06	1.50	1.84	2.37	2.81	3.35			
CC14.175	1.6	0.87	1.24	1.75	2.14	2.77	3.27	3.91			
CC14.200	1.7	1.00	1.41	2.00	2.45	3.16	3.74	4.47			
CC14.250	1.9	1.25	1.77	2.50	3.06	3.95	4.68	5.59			
CC14.300	2.1	1.50	2.12	3.00	3.67	4.74	5.61	6.71			
CC14.350	2.3	1.75	2.47	3.50	4.29	5.53	6.55	7.83			
CC14.400	2.4	2.00	2.83	4.00	4.90	6.32	7.48	8.94			
CC14.475	2.7	2.37	3.36	4.75	5.82	7.51	8.89	10.62			
CC14.650	3.1	3.25	4.60	6.50	7.96	10.28	12.16	14.53			
CC14.800	3.5	4.00	5.66	8.00	9.80	12.65	14.97	17.89			
CC24.100	3.9	5.00	7.07	10.00	12.25	15.81	18.71	22.36			
CC24.125	4.3	6.25	8.84	12.50	15.31	19.76	23.39	27.95			
CC24.160	4.9	8.00	11.31	16.00	19.60	25.30	29.93	35.78			
CC24.180	5.2	9.00	12.73	18.00	22.05	28.46	33.67	40.25			
CC24.200	5.5	10.00	14.14	20.00	24.49	31.62	37.42	44.72			
CC24.225	5.8	11.25	15.91	22.50	27.56	35.58	42.09	50.31			
CC24.250	6.1	12.50	17.68	25.00	30.62	39.53	46.77	55.90			

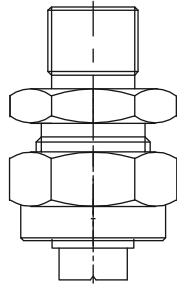
90° SPRAY ANGLE	ORIFICE SIZE (mm)	FLOW CAPACITY IN LPM AT DIFFERENT PRESSURE							G/A DIMENSION. MM		
MODEL NO.		PRESSURE [BAR]									
		0.5	1.0	2.0	3.0	5.0	7.0	10.0	H	H1	D
CC16.050	0.8	0.25	0.35	0.50	0.61	0.79	0.94	1.12	11	9	14.8
CC16.075	1.0	0.37	0.53	0.75	0.92	1.19	1.40	1.68	Weight (Metals) = 9.0 gms. Approx		
CC16.100	1.2	0.50	0.71	1.00	1.22	1.58	1.87	2.24			
CC16.150	1.5	0.75	1.06	1.50	1.84	2.37	2.81	3.35			
CC16.175	1.6	0.87	1.24	1.75	2.14	2.77	3.27	3.91			
CC16.200	1.7	1.00	1.41	2.00	2.45	3.16	3.74	4.47			
CC16.250	1.9	1.25	1.77	2.50	3.06	3.95	4.68	5.59			
CC16.300	2.1	1.50	2.12	3.00	3.67	4.74	5.61	6.71			
CC16.350	2.3	1.75	2.47	3.50	4.29	5.53	6.55	7.83			
CC16.400	2.4	2.00	2.83	4.00	4.90	6.32	7.48	8.94			
CC16.475	2.7	2.37	3.36	4.75	5.82	7.51	8.89	10.62			
CC16.650	3.1	3.25	4.60	6.50	7.96	10.28	12.16	14.53			
CC16.800	3.5	4.00	5.66	8.00	9.80	12.65	14.97	17.89			
CC26.100	3.9	5.00	7.07	10.00	12.25	15.81	18.71	22.36			
CC26.125	4.3	6.25	8.84	12.50	15.31	19.76	23.39	27.95			
CC26.160	4.9	8.00	11.31	16.00	19.60	25.30	29.93	35.78			
CC26.180	5.2	9.00	12.73	18.00	22.05	28.46	33.67	40.25			
CC26.200	5.5	10.00	14.14	20.00	24.49	31.62	37.42	44.72			
CC26.225	5.8	11.25	15.91	22.50	27.56	35.58	42.09	50.31			
CC26.250	6.1	12.50	17.68	25.00	30.62	39.53	46.77	55.90			

CC Series Flat Spray Nozzles

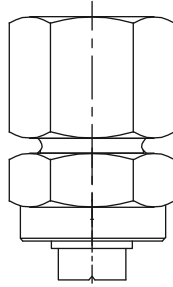
Type of Fitting Arrangements



Weldable



Threaded (M)



Threaded (F)

Typical application :

- Spray Coating
- Lubricating
- Metal Processing
- Spray Cooling
- Parts Washing



120° SPRAY ANGLE	ORIFICE SIZE (mm)	FLOW CAPACITY IN LPM AT DIFFERENT PRESSURE							G/A DIMENSION. MM		
		PRESSURE [BAR]							H	H1	D
		0.5	1.0	2.0	3.0	5.0	7.0	10.0	11	9	14.8
CC18.050	0.8	0.25	0.35	0.50	0.61	0.79	0.94	1.12	Weight (Metals) = 9.0 gms. Approx		
CC18.075	1.0	0.37	0.53	0.75	0.92	1.19	1.40	1.68			
CC18.100	1.2	0.50	0.71	1.00	1.22	1.58	1.87	2.24			
CC18.150	1.5	0.75	1.06	1.50	1.84	2.37	2.81	3.35			
CC18.175	1.6	0.87	1.24	1.75	2.14	2.77	3.27	3.91			
CC18.200	1.7	1.00	1.41	2.00	2.45	3.16	3.74	4.47			
CC18.250	1.9	1.25	1.77	2.50	3.06	3.95	4.68	5.59			
CC18.300	2.1	1.50	2.12	3.00	3.67	4.74	5.61	6.71			
CC18.350	2.3	1.75	2.47	3.50	4.29	5.53	6.55	7.83			
CC18.400	2.4	2.00	2.83	4.00	4.90	6.32	7.48	8.94			
CC18.475	2.7	2.37	3.36	4.75	5.82	7.51	8.89	10.62			
CC18.650	3.1	3.25	4.60	6.50	7.96	10.28	12.16	14.53			
CC18.800	3.5	4.00	5.66	8.00	9.80	12.65	14.97	17.89			
CC28.100	3.9	5.00	7.07	10.00	12.25	15.81	18.71	22.36			
CC28.125	4.3	6.25	8.84	12.50	15.31	19.76	23.39	27.95			
CC28.160	4.9	8.00	11.31	16.00	19.60	25.30	29.93	35.78			
CC28.180	5.2	9.00	12.73	18.00	22.05	28.46	33.67	40.25			
CC28.200	5.5	10.00	14.14	20.00	24.49	31.62	37.42	44.72			
CC28.225	5.8	11.25	15.91	22.50	27.56	35.58	42.09	50.31			
CC28.250	6.1	12.50	17.68	25.00	30.62	39.53	46.77	55.90			